



5GW

Global Great Green Wall

A new paradigm of
SUSTAINABILITY and
ECONOMIC GROWTH
without borders

Confidential

OVERVIEW

The Global Great Green Wall (3GW) initiative is a holistic economic and social approach that aims to protect forests, reforest, and restore degraded landscapes.

The initiative will create economies and trade with proper forestry management, new agriculture, technology, education, and banking with the capability of transforming millions of lives.

This ambitious initiative is being implemented in countries across the globe and will revitalize thousands of communities wherever we land. It brings together countries and international partners under one strategic plan.



Objective 1

- ▶ **What is the Global Great Green Wall – 3GW?**
- ▶ We are a consortium of businesses and professionals with an eye to approach the world's economy, the ecology, and future society, with a holistic approach that will be beneficial for the people and good for business while resuscitating the earth.



Objective 2

- ▶ 3GW's ambition is to sequester millions of tons of carbon to create certified nature-based carbon credits through forest protection/reforestation, and creating green farms on millions of hectares of currently degraded land. Resulting in an agricultural economy that will create countless green jobs.



Objective 3

Along with education, training, and banking, this will help communities living along the Wall to grow:

- The world's most precious natural asset is fertile land
- Protect natural forests
- Reforest areas destroyed by logging, fire, drought
- Generate economic opportunities for every community
- Provide food security for anybody that goes hungry
- Manage climate resilience in regions around the globe
- Create a new paradigm of community and sustainability



THE OPPORTUNITY

Soil Rescue Program contributes to the local economy in many ways.

The program meets 14 of the 17 UN Sustainable Development Goals. In addition to being one of the solutions in the fight against climate change.

The world is relying on governments, agencies, and good corporate citizens to reduce the impact of climate change, reverse desertification, and improve food security in regions devastated by drought. Our nopal cactus programs provides a way to fulfil ESG mandates through an efficient, profitable business model.

Environmental and Social Responsibility



THE OPPORTUNITY

World carbon markets are changing world economics

At the Global Great Green Wall, CE has attained certification of the nopal cactus for carbon credits, making it the first producer in the world to secure this achievement.

Shell Global – Nature Based Systems

<https://www.shell.com/energy-and-innovation/new-energies/nature-based-solutions.html>

Net-zero aviation needs up to 1 trillion in carbon offsets by 2050

<https://www.newscientist.com/article/2356840-net-zero-aviation-needs-up-to-1-trillion-in-carbon-offsets-by-2050/>

Morgan Stanley commits to mobilizing \$1 trillion by 2030 for sustainable solutions that include helping prevent and mitigate climate change.

<https://www.morganstanley.com/ideas/low-carbon-finance-1-trillion-dollar-pledge#:~:text=Morgan%20Stanley%20commits%20to%20mobilizing,global%20issues%20of%20our%20time.>



THE OPPORTUNITY

Tesla continues to cash in on carbon credits

<https://www.proactiveinvestors.com/companies/news/988168/tesla-continues-to-cash-in-on-carbon-credits-988168.html>

Apple expands innovative Restore Fund for carbon removal

<https://www.apple.com/newsroom/2023/04/apple-expands-innovative-restore-fund-for-carbon-removal/>



World carbon markets are **changing** world economics



Iron and Steel Industry Will Buy \$250B Carbon Credits for Net Zero

<https://carboncredits.com/iron-and-steel-industry-buys-250b-carbon-credits-net-zero/>

BROAD SWATHS OF SUITABLE UNUSED LAND

- We can use arid or semi-arid land - up to 40% of the world's land surface.
- It's inexpensive, available, and largely unused.
- Much is in the world's least developed countries with 1/3 of world's population.
- >500k hectares of land identified (>200mm carbon credits opportunity) in the US, Europe and Africa.
- Countries identified where 3GW has agreements or in discussions.



AGRICULTURE

NOPAL CACTUS

3GW has partnered with Colorful Euphoria Lda, a Portuguese company specializing in researching, planting, and managing *Opuntia ficus-indica* (nopal) cactus farms to create an agri-economy and generate millions of carbon credits on unusable land.

The **Best Plant** for the Job(s)

- Prickly, but Not Picky - Our plants will grow on barren land.
- Fast Growing - 3-5 years to maturity under ideal scenarios.
- Quick Deployment - 25 million 'startup cladodes' ready for accelerated planting.
- Certified Carbon Sequestration - 500-1,000 credits per hectare - certified.
- Bountiful Harvests - without killing the plant - bioenergy, biofuel, food, fodder, fertilizer and more.
- Approved for Export/Phytosanitary - Our cladodes are preapproved for export.
- Less water - draws water from air - up to 80% less water than other crops.
- Fire and pest resistant genetics.
- Non-invasive - will file to meet local regulations.
- Rehabilitates Land.



QUALITY CARBON CAPTURED – NATURALLY

Long life and carbon dense

Verifiable

- Certified by one of Europe's top science-backed agricultural carbon certification entities.
- Up to 500-1000 certified carbon credits/hectare in 3-5 years.

Real and Additional

- Growing large cactus forests using unused land (the baseline setting).
- Where there is now little carbon storage, there will be a vibrant, carbon-dense, cactus ecosystem.

Permanent

- New ecosystem lasts and grows for decades.
- Harvests create carbon friendly biomass outputs - while leaving main plant intact.



Carbon Certification
#001/2023



KEY PROJECT STATISTICS

Carbon capture, along with large scale biomass outputs

7 million

estimated certified, real, additional and permanent carbon credits from a 10k hectare farm within 5 years

+\$200 million

estimated carbon credits on a 10k ha farm

+0.5 million

hectares of barren/unused land we have identified for our use

2,000+

jobs created to build and harvest a 10k hectare farm

Billions

of KG's of harvestable biomass, without killing the plants

Billions

\$ harvest value - food, bioenergy, biofuel and more

Dozens

governments, farmers unions and communities offering their unused lands

BOUNTIFUL HARVESTS

Biomass Output for BioEnergy, Food, Fodder, Fertilizer and Others

BioEnergy/Biofuel

- Under well-irrigated conditions, our outputs can range from 40 to 50 mg DM ha/year.
- Similar to or exceeds maize, switchgrass, poplar, and sugarcane - with far lower water inputs.
- Useful for bioethanol and biomethane due to its high productivity, ease of propagation, suitability for coppicing, and low lignin content.

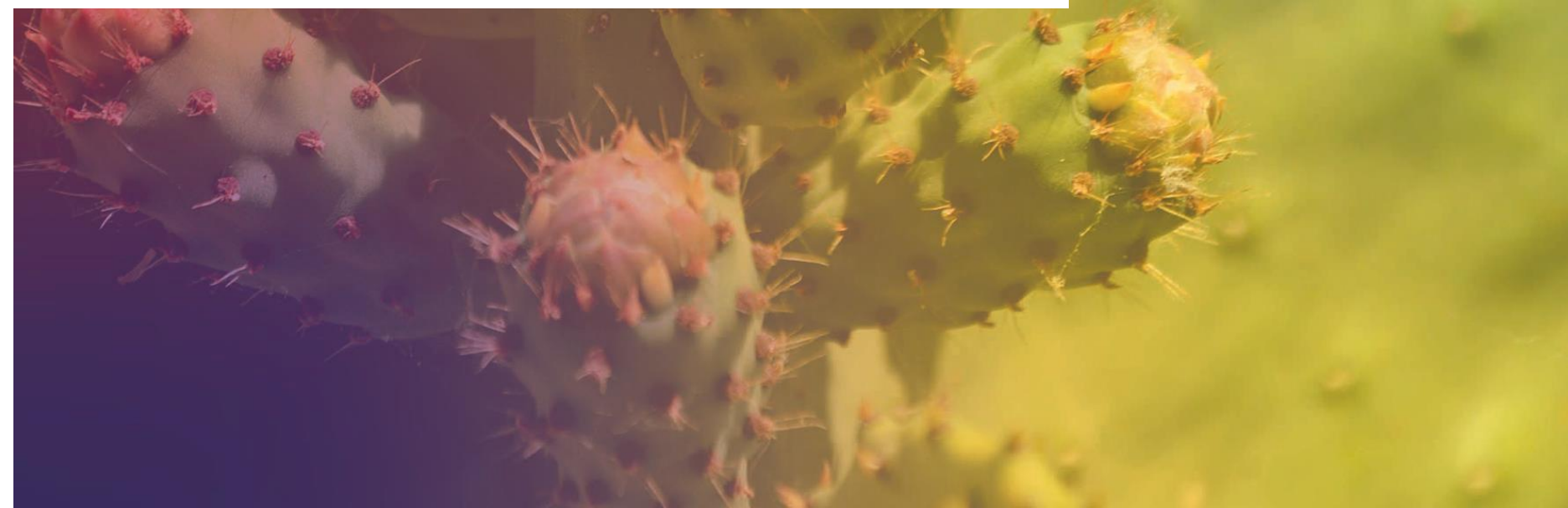
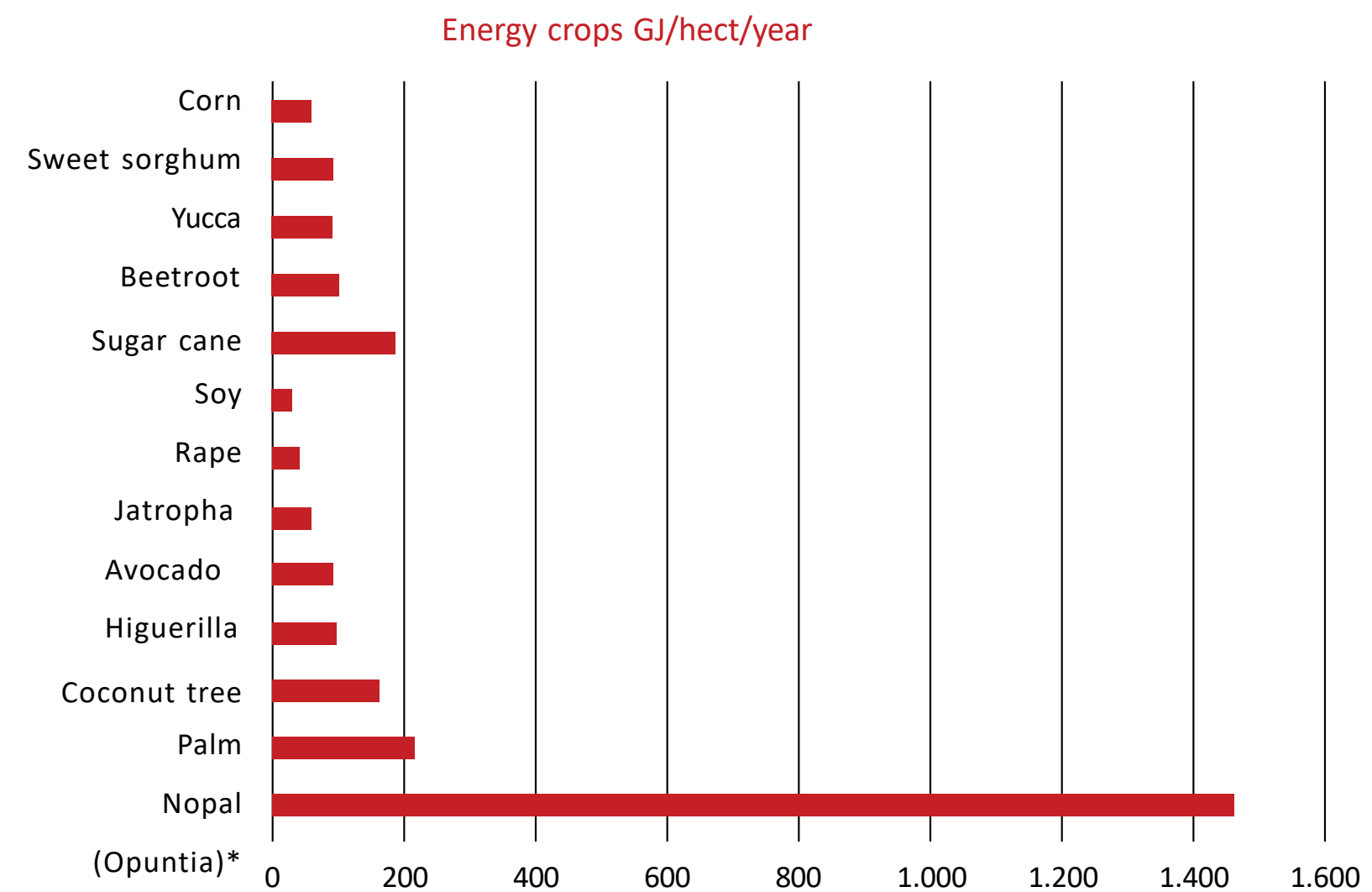
Food and Fodder

- Excellent fruit for human consumption.
- Significant source of essential vitamins and nutrients.
- High water and nutrient content as fodder.
- Income and food security for local economies.

1(Dubeux et al., 2006; Flores-Hernandez et al., 2004; Garcia de Cortezar & Nobel, 1991; Lima et al., 2016; Mason et al., 2015; Nobel, 1991, 1996; Nobel & Garcia de Cortezar, 1991; Nobel et al., 1992; Reis et al., 2016).

2Cushman et al., 2015; do Nascimento Santos et al., 2016; Lueangwattanapong et al., 2020; Mason et al., 2015; Yang et al., 2015; Zimmerman, 2017

3Elquig 2023



BUILDING STRONGER COMMUNITY THROUGH AGRICULTURE

Non-invasive

- Our cacti are considered non-invasive in most jurisdictions.
- Control plan proven in Europe.
- Certified for Global GAP and phytosanitary: ready and legal for export in volume out of Europe.

Biodiversity

- Creates an ecosystem for animal and plant life.
- Backed by science.

Social Impact – Not just community friendly, community endorsed

- Turn thousands of hectares of unproductive land into productive farms.
- Creates thousands of local jobs along with energy and food security.



FOREST PROTECTION/ RESTORATION

Almost a third of the planet is covered by forests. That's equivalent to 40.6 billion hectares. These enormous forested areas are essential to our survival: the water we drink, the food we eat, the air we breathe.

However, we are destroying our very source of life: 13 million hectares of forest are cut down each year.

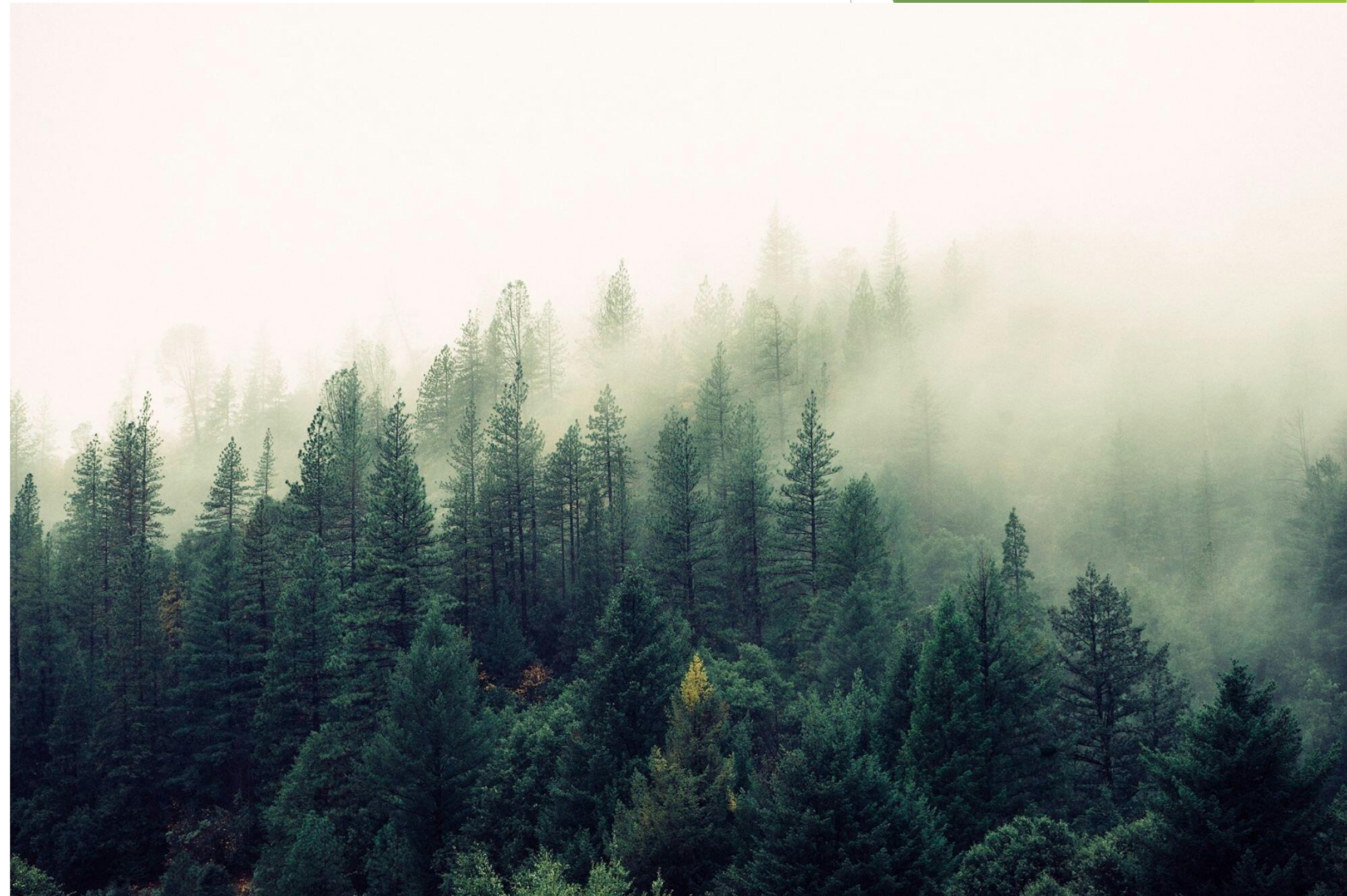
The result is climate change – but we can reverse this with effective strategies that involve regenerative agriculture and forest protection/restoration.

Goals and Benefits

- Restore lost biodiversity
- Protect/Create nature-based carbon sink
- Reverse soil erosion and restore water basins
- Improve human health

WHY IT IS IMPORTANT TO TAKE CARE OF FORESTS

- They **enrich the soil with nutrients** through their roots and the leaves that fall from the treetops.
- They are Earth's **largest carbon sink**, absorbing carbon dioxide and releasing oxygen.
- They are a source of **basic and supplementary food** and income for millions of people.
- They are like **natural aqueducts** that redistribute up to 95% of the water they absorb.
- They are home to **80% of the world's biodiversity** (animals, plants, insects).



FOREST RESTORATION

- **Develop a plan:** Reforestation needs to be sustainable
- **Site study:** Analyze the land, conditions of the area, soil, type of local fauna and flora that live in the ecosystem
- **Choosing optimal species:** While it is ideal to plant local species, it is acceptable to including fast-growing species that are compatible with the soil and climate.
- **Planting method:** Proper soil preparation, using the right tools, opting for least invasive technique.
- **Tree spacing:** Tree height and coverage must be considered so that they do not interfere with each other.
- **Establish a protection plan:** A follow-up plan is critical to protect the reforested area from disease, infestation, fire, illegal logging, etc.



COMMUNITY IMPACT

When we talk about protecting forests or planting trees, we often talk about the ecological impacts. Those impacts are very important, of course, and stopping deforestation or reforestation provide so many benefits to nature.

But these have an extremely powerful social impact on the communities where the trees are planted or saved. These include:

- Educating smallholder farmers on best land practices to reduce environmental impact and increase crop yields.
- Supporting indigenous communities in their vital work of safeguarding existing forests.
- Providing opportunities for youth and communities to learn more about nature and the environment.
- Providing sustainable jobs and income.
- Improving health, well-being, and nutrition.

Sustainable land use practices also ensure that natural resources benefit everyone, including marginalized communities. They prioritize equitable access to land and promote the recognition and protection of the rights of indigenous people, local communities, and small-scale farmers.

While reforestation is vital for nature and the environment, the social impact is just as crucial. From helping locals earn an income to promoting gender equity, reforestation is a remarkable way to help give back to communities.



CERTIFICATION

3GW has chosen to partner with CERTIS, a well-recognized and established firm with decades of experience in agriculture and forestry certification. CERTIS has established its reputation by awarding carbon credit certification based its own processes and methodologies that rely on real data and not projections or estimates. This is critical in a fast-growing industry that is currently being plagued with questionable schemes and claims.



Control and certification company

NP EN ISO/IEC 17065
ISO/IEC 17021

Recognised by the competent authority DGADR
(Directorate General for Agriculture and Rural
Development).

With 25 years of experience in the market and growing



CERTIS APPROACH

CCC+: NEW PRODUCT



CERTIS own formula, developed over more than two years of work, with experts from each of the areas involved in the calculation, for the Carbon Calculation in Production units

The value of the amount of carbon indicated on the certificate is a real value, not estimated, calculated in relation to the result of agricultural practices in the previous year

- Avoid greenwashing
- Allows the production unit manager to improve in terms of capturing more carbon and or reducing emissions each year improving the result of his carbon balance

All values are double checked, using biomass values obtained by satellite and values from scientific articles, adapted to the geographic location type of culture and local conditions.

CERTIS does not and will not have any connection to the trade of carbon credits

- Ensure complete independence and trust

What innovative technology are we using?

Biomass calculation via satellite

GEDI LiDAR system: a tool for forest monitoring developed by NASA



CERTIS APPROACH

For 1 year now, CERTIS is part of **QIMA** with offices in **America, Asia, Africa and Europe** - CERTIS now act all over the globe!

The Americas

Argentina
Belize
Brazil
Canada
Chile
Colombia
Costa Rica
Dominican Republic
Ecuador
El Salvador
Guatemala
Haiti
Honduras
Mexico
Nicaragua
Panama
Paraguay
Peru
United States
Uruguay

Africa

Botswana
Egypt
Ethiopia
Ghana
Kenya
Lesotho
Madagascar
Mauritius
Morocco
Nigeria
Swaziland
South Africa
Tunisia
Uganda

Asia-Pacific

Australia
Bangladesh
Cambodia
China
Hong Kong SAR China
India
Indonesia
Japan
Laos
Myanmar (Burma)
Singapore
South Korea
Sri Lanka
Malaysia
Pakistan
Philippines
Thailand
Vietnam

Europe

Albania
Austria
Belgium
Bosnia & Herzegovina
Bulgaria
Croatia
Cyprus
Czech Republic
Denmark
Estonia
Finland
France
Germany
Greece
Hungary
Ireland
Italy
Kosovo
Latvia
Lithuania

Netherlands
Macedonia
Malta
Moldova
Montenegro
Poland
Portugal
Romania
Russia
Serbia
Slovakia
Slovenia
Spain
Sweden
Switzerland
Turkey
Ukraine
United Kingdom

Middle East

Israel
Jordan
Saudi Arabia
Turkmenistan
United Arab Emirates

FOREST STEWARDSHIP

CERTIS certifies the sustainable management of forests in accordance with the **Forest Stewardship Council (FSC)** and the **Programme for the Endorsement of Forest Certification (PEFC)**.

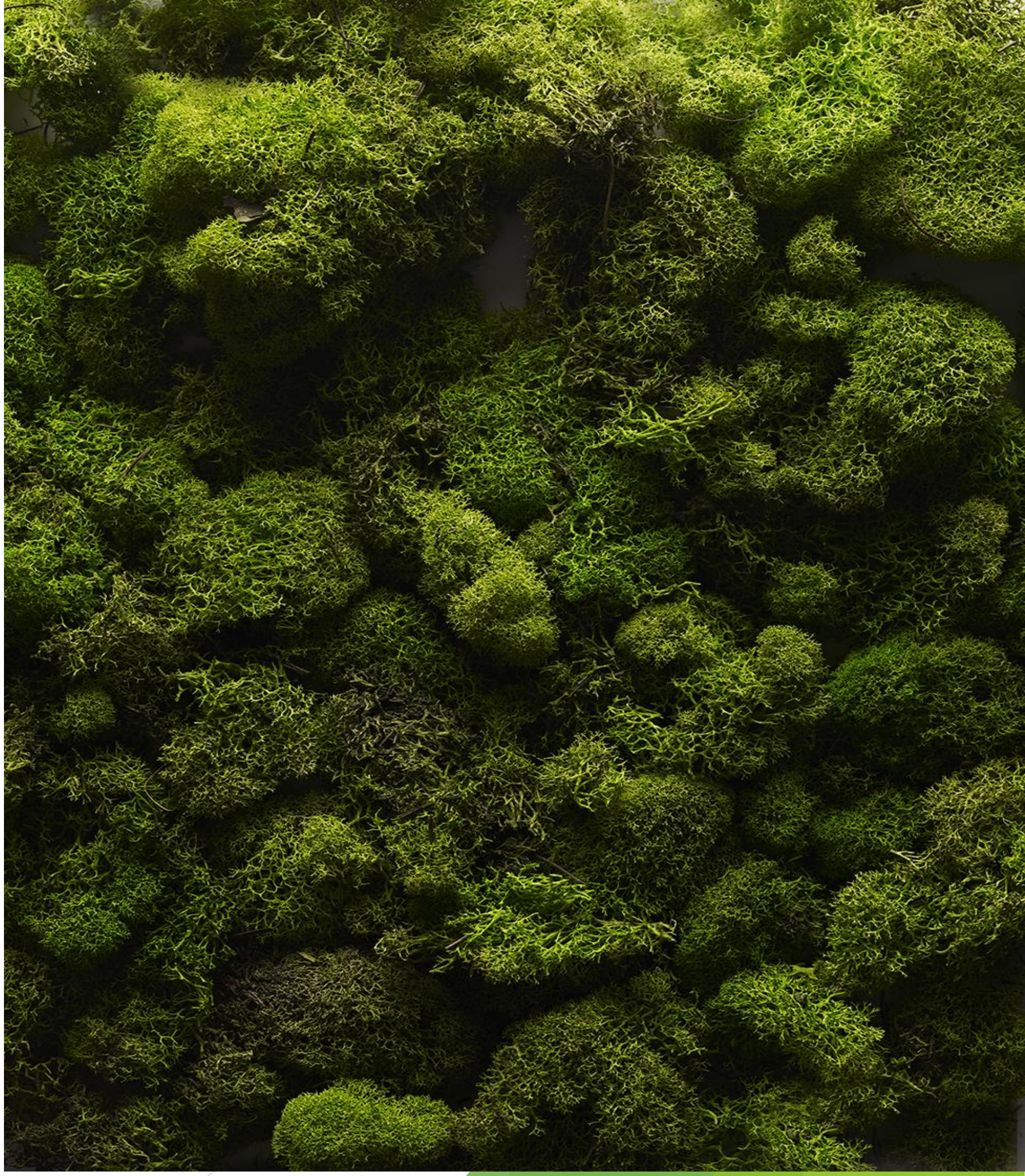
These systems have obtained greater relevance worldwide and are focused on how to manage the forest, combating deforestation, ensuring its long-term sustainability.

The choice of the type of certification system to be adopted is dependent on the type of forest products produced and their national and international marketing requirements.

In addition to demonstrating compliance with Forest Management Standards, 3GW also looks to comply with additional management requirements, including ES2.1 Impact Requirements (Conservation of Forest Carbon Stocks).

- Forests are identified for protection according to their carbon stocks, in accordance with FSC-GUI-30-006 FSC Guidance for Demonstrating Ecosystem Services Impacts.
- Management activities improve, restore, or maintain carbon storage in the forest, including through forest protection and exploitation practices with reduced carbon impact, as described in FSC-GUI-30-006 Guidance for Demonstrating Ecosystem Services Impacts.

CERTIS' CCC+ complements this requirement with a robust calculation of the carbon stock and its annual balance of the forest unit, allowing the entry into the market of carbon credits and the improvement of management with the objective that carbon is also an output to be considered in the management of the production unit, with environmental, social (as required by the Standards), and financial sustainability objectives.



OUR CORE PRINCIPLES

GOVERNANCE

Effective governance

Our 3GW carbon-crediting program has effective program governance to ensure transparency, accountability, continuous improvement, and the overall quality of carbon credits.

Tracking

We ensure our carbon credits are uniquely identified, recorded, and that our activities and carbon credits can be identified securely and unambiguously.

Transparency

We provide comprehensive and transparent information on all credited mitigation activities. The information shall be publicly available in electronic format and shall be accessible to nonspecialized audiences, to enable scrutiny of mitigation activities.

Robust Independent third-party validation and verification

We have engaged Certis, a recognized and respected third-party certification firm to provide independent validation and verification of mitigation and sequestering activities.

EMISSIONS IMPACT

Additionality

Our CO₂ sequestering activity will be additional, i.e., they would not have occurred in the absence of the incentive created by carbon credit revenues.



OUR CORE PRINCIPLES

EMISSIONS IMPACT .. continued

Permanence

Our CO₂ sequestering will be permanent or, where there is a risk of reversal, there shall be measures in place to address those risks and compensate for reversals.

Robust quantification of sequestering

Our CO₂ sequestering will be robustly quantified, based on conservative approaches, completeness, and sound scientific methods.

No double counting

Our CO₂ sequestering activity is not double counted, i.e., they shall only be counted once towards achieving targets or goals.

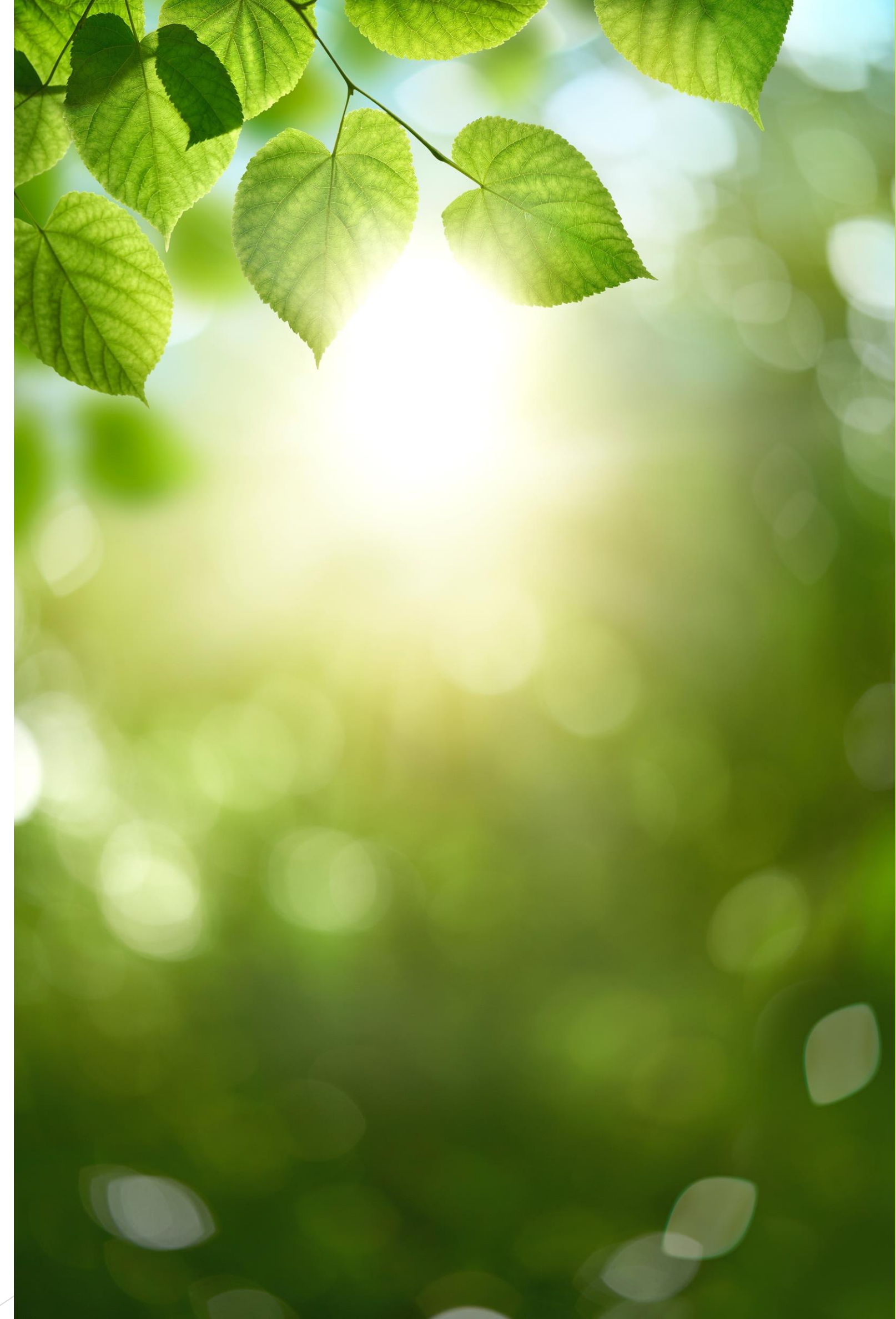
SUSTAINABLE DEVELOPMENT

Sustainable development benefits and safeguards

Our carbon-crediting program has clear guidance, tools and compliance procedures to ensure mitigation activities conform with or go beyond widely established industry best practices on social and environmental safeguards while delivering positive sustainable development impacts.

Contribution to net-zero transition

Our sequestering activity avoids locking-in levels of GHG emissions, technologies, or carbon-intensive practices that are incompatible with the objective of achieving net-zero GHG emissions by 2050.



3GW PARTNERS



SUMMARY

- Unique opportunity to create large-scale farms on unused land;
- Large quantities of inexpensive, available tracts of land;
- Volume high quality certified carbon credits and bioenergy outputs;
- Experienced team for project setup, training and implementation;
- Proprietary genetics, project, equipment and farming practices;
- Rapid startup and growth methodologies;
- Supported by Federal, Regional and Local Governments and communities.
- Protect and restore forests – the world's largest carbon sinks, generating millions of carbon credits.





3GW

Global Great Green Wall

CONTACT US

Bank of Canada Building
250 University Avenue
Suite 200
Toronto, Ontario, Canada
M5H 3E5
contact@3GW.org

Global Great Green Wall Inc., 2023

This document contains confidential and proprietary information that is the intellectual property of Global Great Green Wall Inc. 2023.

Unauthorized disclosure, copying, distribution, or use of any part of this document, in whole or in part, without the prior written consent of Global Great Green Wall is strictly prohibited.